

**USER AND INSTRUCTION
E MANUAL**



*prima 100
Tolva*


Aerográficos GAHE, S.A.
Parque Industrial de Villamuriel
Avda. Comunidad Europea nº 83
34190 Villamuriel de Cerrato
Palencia - Spain
Tel. + 34 979 761020

Index
PRIMA 100 Tolva



1. DEAR CLIENT	04
2. SAFETY RULES	05
3. PACKAGING	05
4. WASTE AND ENVIRONMENT	05
5. INSPECTION AT RECEPTION	06
6. IDENTIFICATION DATA	06
7. REQUIRED INSTALLATION	07
8. FEATURES	07
8.1 PRODUCTS THAT CAN BE SPRAYED	08
9. ACCESSORIES	08
9.1 STANDARD ACCESSORIES AND DOCUMENTATION	08
9.2 OPTIONAL ACCESSORIES	08
10. WORKING PROCESS	09
11. MAINTENANCE AND CLEANING	09
12. WORKING INCIDENTS	10
13. EXPLODED VIEWS	11
13.1 PRIMA 100 TOLVA EXPLODED VIEW	11
14. WARRANTY	12
15. WARRANTY CERTIFICATE	13

Dear Client,

First of all, we would like to thank you for the trust placed in us by acquiring one of our  products, which we hope will meet your expectations.

Aerográficos GAHE, S.A. is the benchmark for many painting professionals. Our company is young, familiar and dynamic but has great experience. Founded in 1973, it has developed and adapted during these years in order to offer a better service to its clients every day.

All the components of this product have passed strict quality controls to guarantee the highest performance, so we recommend that you use original spare parts.

Aerográficos GAHE, S.A. has prepared this user and maintenance guide as a document that is also part of the machine, so it has to be kept throughout its useful life. The user and maintenance staff must always have this manual in mind.

The Management



2. SAFETY RULES

A misuse of this equipment may result in accidents, damage or malfunctioning. Read the following instructions carefully.

Bear in mind the following rules:

- Make sure the person in charge of using the equipment is qualified to do so.
- Shut down the equipment for any operation, including cleaning, and decompress the circuits by pulling the trigger.
- Always use the equipment with approved protections (gloves, protective mask, earplugs and proper clothing).
- The place where the device is used must be well-ventilated and equipped with an air extraction system (paint booth) and there should not be direct exposure to flames (cigarettes, lamps...) while working.
- Keep the working area clean and without waste (rugs, solvents...).
- Check the chemical compatibility of the products to be used.
- Do not exceed the indicated maximum pressures.
- Do not use worn, folded, broken or leaking hoses.
- Do not aim at people or animals.
- This gun is not for children.
- Do not use the gun for those operations it has not been designed for.
- The use of halogenated hydrocarbon products can cause explosions from chemical reactions; that is why products containing those elements are forbidden.



3. PACKAGING

The PRIMA 100 Tolva lisos guns are presented in a cardboard box. All its standard accessories are inside the packaging.

During delivery and storage the equipment must have a temperature between 0° and 50°C (32 and 122°F), and a non-excessive humidity.



4. WASTE AND ENVIRONMENT

Model	Measures	Weight
PRIMA 100 Tolva	250 x 244 x 262	1.145 gr.



REMEMBER:

To get rid of polluting and dangerous products, packaging, disused equipment and tools and any type of waste produced by its activity in general, please use the suitable waste sorting and treatment point for each case.

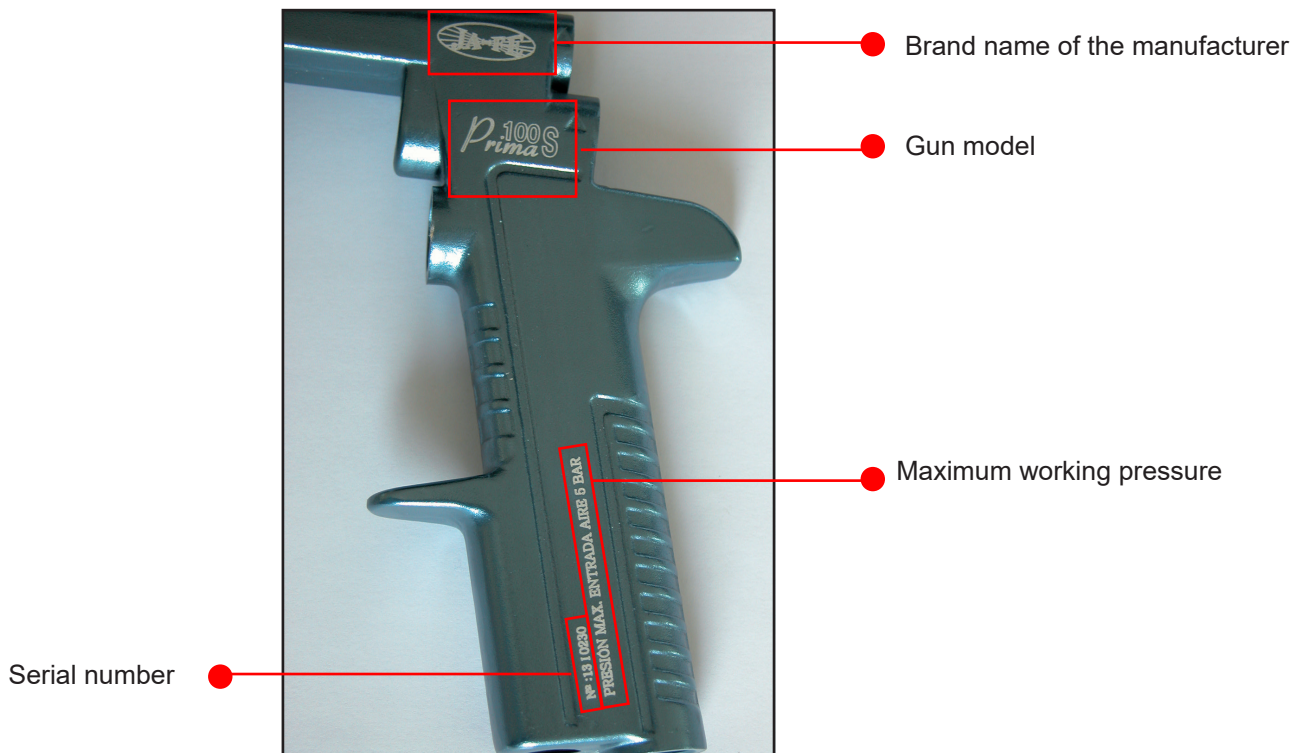
If you need any information related to this, please go to the Ministry of the Environment in your regional government or the nearest city hall.

5. INSPECTION AT RECEPTION

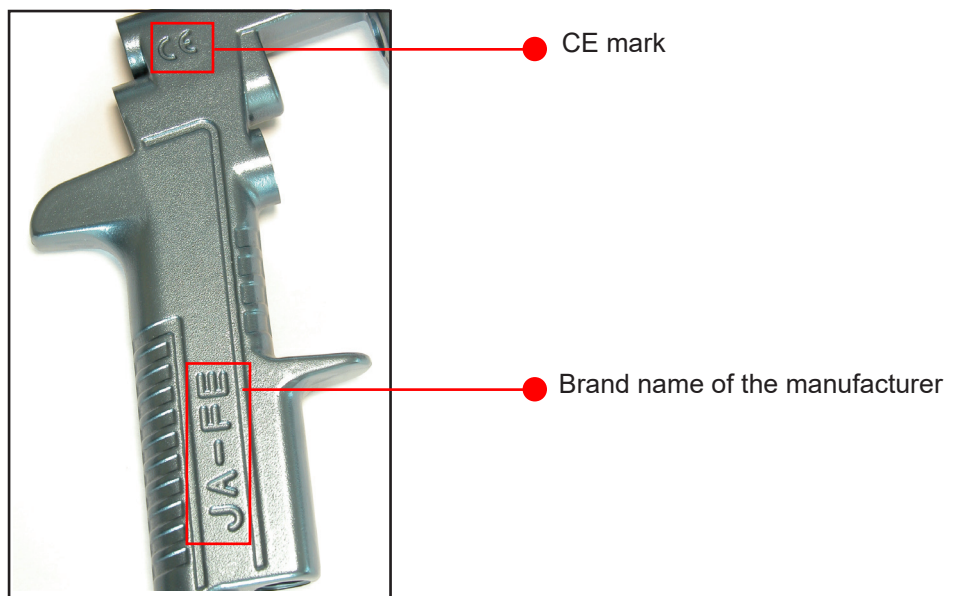
Before using this equipment the user must make sure that it has not been damaged during delivery or storage. Moreover, it must be checked that all the components of the equipment are in the packaging.

6. IDENTIFICATION DATA

The gun has the brand name of the manufacturer, the model, its maximum working pressure and its serial number on one of the sides.



On the other side, the brand name of the manufacturer and the CE mark.



7. REQUIRED INSTALLATION

It is advisable to always use dry, oil-free compressed air for better paint results.
Before proceeding with the installation, it is necessary to carry out some inspections:



NOTES:

- Check the hoses are in good condition (no cracks or folds).
- Check the air purifying filter of the supply is not full of water. Due to the fact that if it does not have an automatic purge, its emptying is not automatic either, so it is advisable to carry out emptying operations regularly.

A compressor or a compressed air line connected to the gun, the pump or the pressure tank (depending on the gun model) is required to carry out the installation.

For the PRIMA 100 Tolva model

Before connecting the gun to the compressor, close all the gun regulators (no.6 & no.10).
The air hose that goes to the adaptor comes out from the compressor (no.21).

8. FEATURES

The PRIMA 100 Tolva model offers the best finish at the best price. It is designed to give a medium-high finish quality. The air consumption is shown below.

	Pressure	Consumption
PRIMA 100 Tolva	2 BAR	160 l/min.

Aerográficos GAHE, S.A. tests all its guns before they leave the facilities, assuring this way optimal operation.

Technical Data	PRIMA 100 Tolva
Min. compressor	2 CV.
Available nozzles	See combination table
Body	Anodized
Finishing quality	Medium
Pollution level	Low
Max. inlet air pressure	5 Bar
Max. working temperature	50°
Weight	490 gr.
Air inlet	CR ¼ M
Product supply	Gravity

The technical data are indicative and can be changed without prior notice, if an improvement of the product is considered with it.

8.1. PRODUCTS THAT CAN BE SPRAYED

This gun is designed and recommended to spray:

- Plastic paints
- Multicolored
- Soft distemper paints

9. ACCESSORIES

9.1. STANDARD ACCESSORIES

Aerográficos Gahe, S.A. delivers the gun with the following accessories and documentation:

- 5-LITER NYLON DEPOSIT.
- CLAMP.
- ADAPTOR TO FUNNEL.
- USER AND MAINTENANCE GUIDE.

9.2. OPTIONAL ACCESORIES

Aerográficos GAHE, S.A. offers a wide range of optional accesories:

- COMBINATION TABLE

*PRIMA 100 Tolva
Combination Table*

COMPLETE KIT	FLUID TIP + NEEDLE	NOZZLE
50554-1.40	50587-1.40 B	50213-Nº1 B
50554-2.00	50587-2.00 B	50213-Nº2 B
50554-2.50	50587-2.50 B	50213-Nº3 B
50554-3.00	50587-3.00 B	50213-Nº4 B

- HOSES



AIR HOSE Ref. 51011-X in lenghts from 5 to 50 m. with a C-8 adaptor in one side and a X-8 connection on the other side.

FURTHER INFORMATION
about all these products
can be found on the
General Catalog



10. WORKING DESCRIPTION

1. Close the gun regulators (*no.6* & *no.10*).
2. Prepare the product to be sprayed (according to the manufacturer's instructions).
3. Loose the product regulator (*no.10*), point the gun at a paint pit or a test surface and pull the trigger until the paint comes out.
4. Adjust the fun width (*no.6*) and the product regulator (*no.10*) until you achieve the desired paint pattern.



NOTES:

- Always use the gun in a perpendicular position to the area to be painted.
- Avoid working only with a wrist movement.
- Do not forget that cross coats do not cover regularly.
- Spraying with an immobile gun causes a local overload. Therefore, do not pull the trigger before starting to move your arm, and do not release it before finishing the movement.
- Try to get a spraying with regular and constant thickness between the different coats.

11. MIANTENANCE

The ordinary maintenance of the gun is very simple as it does not require any special operation. To ensure the proper functioning, you only have to clean the paint circuit after finishing the activity.

A recommendation for the product to last longer is to use well filtered paints and avoid paints which block the nozzle easily.

CLEANING:

1. Substitute the paint by solvent.
2. Regulate the minimum working pressure (regulate the air at 1 bar -14 psi).
3. Pull the trigger until the whole circuit is completely clean.
4. Disconnect from the compressed air.
5. Clean the air nozzle with a cloth and a brush.
6. Clean the body of the gun with a cloth.
7. Lubricate all the moving parts.







CLEANING NOTES:

- If the cleaning is done in an industrial washing machine for spray guns, the air and product regulator have to be closed (so that the solvent does not damage the joints). Dry the gun with a blowing gun once the cleaning cycle has finished.
- Do not use metallic brushes for cleaning.
- Never sink the gun into solvent.

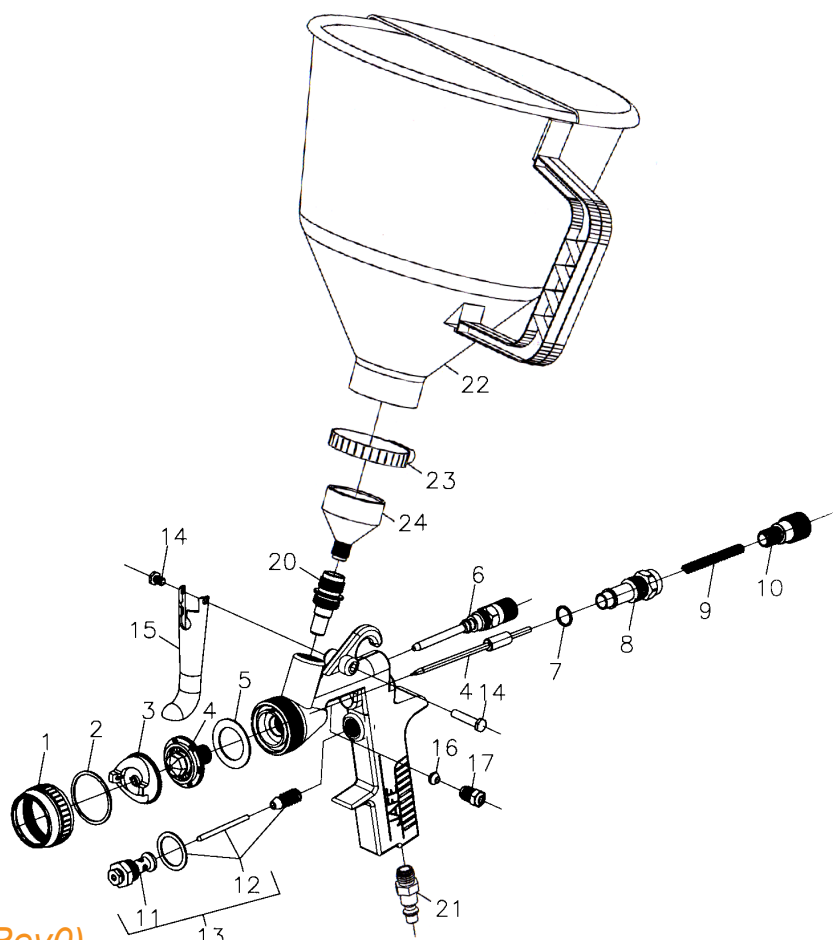
12. TROUBLESHOOTING

A table with incidents that the user can solve himself is shown below.

CONDITION		POSSIBLE CAUSE	SOLUTION
I	No spraying	a. No pressure in the gun	Check the air and product hoses
		b. Bad regulated flow regulator	Regulate it
II	Incorrect spraying	a. Bad regulated spray gun	Correct it
III	 Pattern shape	Blocked nozzle	Clean the nozzle
IV	 Pattern shape		
V	 Pattern shape	Too thick or too much material	Dilute or reduce the amount of material
VI	 Pattern shape	Little material	Reduce the air pressure or increase the product flow
VII	Intermittent spraying	a. Not enough material in the tank or blocked duct	Fill the tank or check/clean the hose
		b. Blocked gun material duct	Clean the gun ducts
		c. Worn packing seal or loose packing screw	Change or tighten the packing seal
		d. Damaged or loose fluid tip	Change or tighten the fluid tip
VIII	Fluid loss through the packing screw	a. Loose packing screw	Tighten, check the needle to make sure there is no movement
		b. Dry packing seal	Lubricate the packing seal
		c. Worn packing seal	Change the packing seal
IX	Leaking fluid tip	a. Dry packing seal	Lubricate the packing seal
		b. Blocked needle	Lubricate the needle
		c. Packing screw too tightened	Too tightened packing screw
		d. Worn nozzle	Change the fluid tip

13. EXPLODED VIEW

13.1 PRIMA 100 Tolva Exploded View



PRIMA 100 Tolva Exploded View (Rev0)

No.	Ref.	Description
1	50566B	Nozzle nut
2	50267B1	Joint, 1 unit
3	50213XB	Nozzle (see combination table)
4	50587XXX	Fluid tip + needle (see combination table)
5	501691B	Joint, 1 unit
6	50536B	Fan regulator kit
7	500111B	Joint, 1 unit
8	50012B	Bushing
9	500131B	Spring, 1 unit
10	500141B	Product regulator
11	50069B	Valve
12	50016	Air closing valve
13	50070	Complete valve
14	50241B	Screw and stud
15	50021B	Trigger
16	500191B	Packing, 1 unit
17	501871B	Packing nut, 1 unit
21	10CR1/4MBLISTER	Quick coupling
22	50160B	Funnel
23	50145B	Clamp
24	50196B	Deposit - Gun union
*	50554XXX	Complete kit (see combination table)
*	50538	Joints kit

14. WARRANTY

This equipment is covered with a 2-year warranty from the date of purchase. The guarantee covers against manufacturing faults and components defects.

Only repairs and elements substitution carried out by technical staff of Aerográficos GAHE, S.A. are covered.

Faulty pieces will be sent carriage paid.

Warranty does not cover:

- Faults or damages caused by improper use of the equipment.
- Faults or damages caused by the use of spare parts different from the original JAFE ones or those recommended by Aerográficos GAHE, S.A.
- Faults or damages caused by bad maintenance.
- Components subject to wear (nozzles, filters, etc.).

Warranty is void:

- Whenever repairing operations or components substitutions are carried out without prior authorization of Aerográficos GAHE, S.A.
- Whenever the serial number is removed or manipulated.
- Whenever it is checked that the fault has been caused by improper use or if the equipment falls, is bumped or by other causes not due to normal working conditions.

All repairing interventions carried out under warranty will not entail a stoppage or extension of the warranty period.

✂ ————— Cut along the dotted line ————— ✂

Model: *PRIMA 100 Tolva*

Date of purchase:

Serial Number:

Purchaser:.....

Address:

City:

Distributor Stamp:

Notes

Notes



Aerográficos GAHE, S.A.
Parque Industrial de Villamuriel
Avda. Comunidad Europea nº 83
34190 Villamuriel de Cerrato
Palencia Spain
Tel. + 34 979 761020